

E1 series

Using simple design style, primary color surface treatment, easy to match with the bedroom. Shell material uses the United States DOW top class fireproof PC. Our products have CE and Ceprei certified with very high cost performance. Each wireless smart switch has a unique identity code and will not control wrongly. Emission energy is only one ten thousandth of a cell phone with no harmful radiation.



Specifications:

Work Type: 86 rocker type
Power mode: kinetic energy; self-powered
Communication mode: FSK
Working frequency: 433MHZ
Keys: 1-3 keys
Color: elegant white, gold, silver

Lifetime: more than 200,000 times
Dimensions: L86 * W86 * H14.5mm
Weight: 86g-110g
Distance: 160m (outdoor), 30m (indoor)
Executive Standard: EN 61058-1: 2002 + A2: 2008;
GB14536.1-2008

S2 series

The world's first 86 push button waterproof wireless smart switch, with waterproof rating of Ip67. Patented detachable buttons allows users to configure different buttons according to the needs to meet the personalized demands. Details present you beautiful visual and unique experience.



Specifications:

Work Type: 86 push button type
Power mode: kinetic energy; self-powered
Communication mode: FSK
Working frequency: 433MHZ
Keys: 1-3 keys
Color: white golden, metallic silver
Lifetime: more than 200,000 times

Dimensions: L86 * W86 * H14.5mm
Weight: 86g-110g
Waterproof rate: Ip67
Installation: fix with screws or paste
Key Configuration: detachable
Distance: 100m (outdoor), 25m (indoor)
Executive Standard: EN 61058-1: 2002 + A2: 2008;
GB14536.1-2008

M series

Adopt six-key kinetic energy acquisition patented technology, superb industrial design, and rebound large panel. Waterproof level reaches Ip67. It can be a switch to control multiple channels, perfectly integrating with the smart home system and achieving several combination of scene. High-quality metal aluminum keys, Apple level craft, showing a beautiful visual and unique user experience.



Classic

High-class

European Style

Specifications:

Work Type: 86 rocker type
Power mode: kinetic energy; self-powered
Communication mode: FSK
Working frequency: 433MHZ
Keys: 6,4,2 keys
Color: Mirror white, metallic silver

Lifetime: more than 200,000 times
Dimensions: L86 * W86 * H14.5mm
Weight: 95g-105g
Distance: 100m (outdoor), 25m (indoor)
Executive Standard: EN 61058-1: 2002 + A2: 2008;
GB14536.1-2008

Single Fire Switch

Switch is directly connected to live line. In the housing refurbishment, without changing the original lighting and wiring, direct replacement of the traditional wall switch can be used. In the new home decoration, it can be directly used single-fire switch, with a wide range of applicability.

Single-fire switch and kinetic energy switch can realize double control and multi-control after pairing, easy to achieve intelligent lighting.



Specifications:

Work type: 86 size push button

Power mode: single fire

Working power: single channel 500W

Voltage: 220V

Keys: 1,2,3 keys

Color: Mirror white, metallic silver

Lifetime: more than 100,000 times

Dimensions: L86 * W86 * H42.8mm

Weight: 119g-139g

**Executive Standard: EN 61058-1: 2002 + A2: 2008;
GB14536.1-2008**

Wireless Receiving Controller

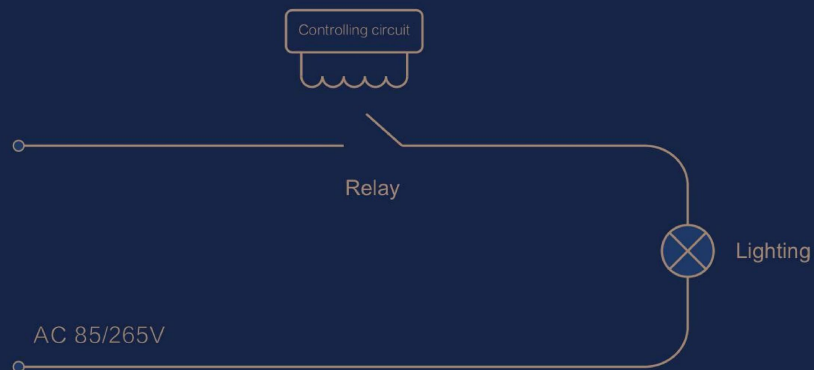
Wireless receiving controller with high efficiency switching power supply, has a wide range of voltage and excellent stability and durability. The interior has a load capacity of 10A relay as the implementation device. It has very good control ability and universal adaptability with LED lights. Usually during 10 milliseconds when LED lamps just turns on, the surge current is 200 times of normal operating current. The controller has anti-surge function, and can instantly restrain the peak current of up to 300A, so that the controller is more safe and durable.

In order to prevent accidental short circuit during installation and lamp aging damage to the controller, the controller inside has a fuse protector. Even if short circuit occurs, the fuse will be immediately melt to protect the controller from damage.

Anti-surge protection, short circuit protection, anti-relay contact adhesion protection.



Wiring diagram



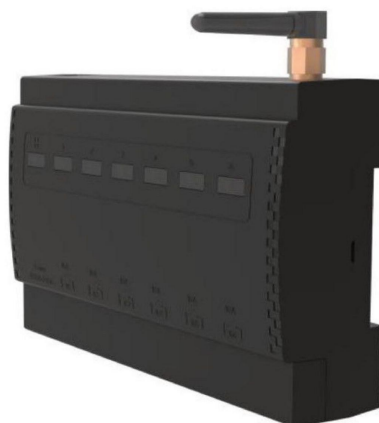


ERC304 10A one circuit control

Operating Voltage: AC85-265V 50/60HZ
Control Channel: One circuit Control
Working Type: work around the clock
Standby Power Consumption: < 0.15W
Receiving Sensitivity: -110dB
Storage Capacity: can store 10 wireless switch information
Control Component Type: relay
Rated Current : AC 10A
Working Lifetime: 100,000 times
Working Temperature: -20°C - 55°C
Product Weight: 55g
Dimensions: L70mm*W44mm*H29mm

ERC101 6 circuits controller

Operating Voltage: AC85-265V 50/60HZ
Control Channel: 6 circuit Control
Working Type: work around the clock
Receiving Sensitivity: -110dB
Control Component Type: relay
Rated Current : AC 16A*2+10A*4
Output Mode: dry contact output
Working Lifetime: 100,000 times
Working Temperature: -20°C - 55°C
Extended function: 485/wifi/z-wave/other options
Dimensions: L126mm*W80mm*H33.6mm



ERC310 Dimming dual module controller

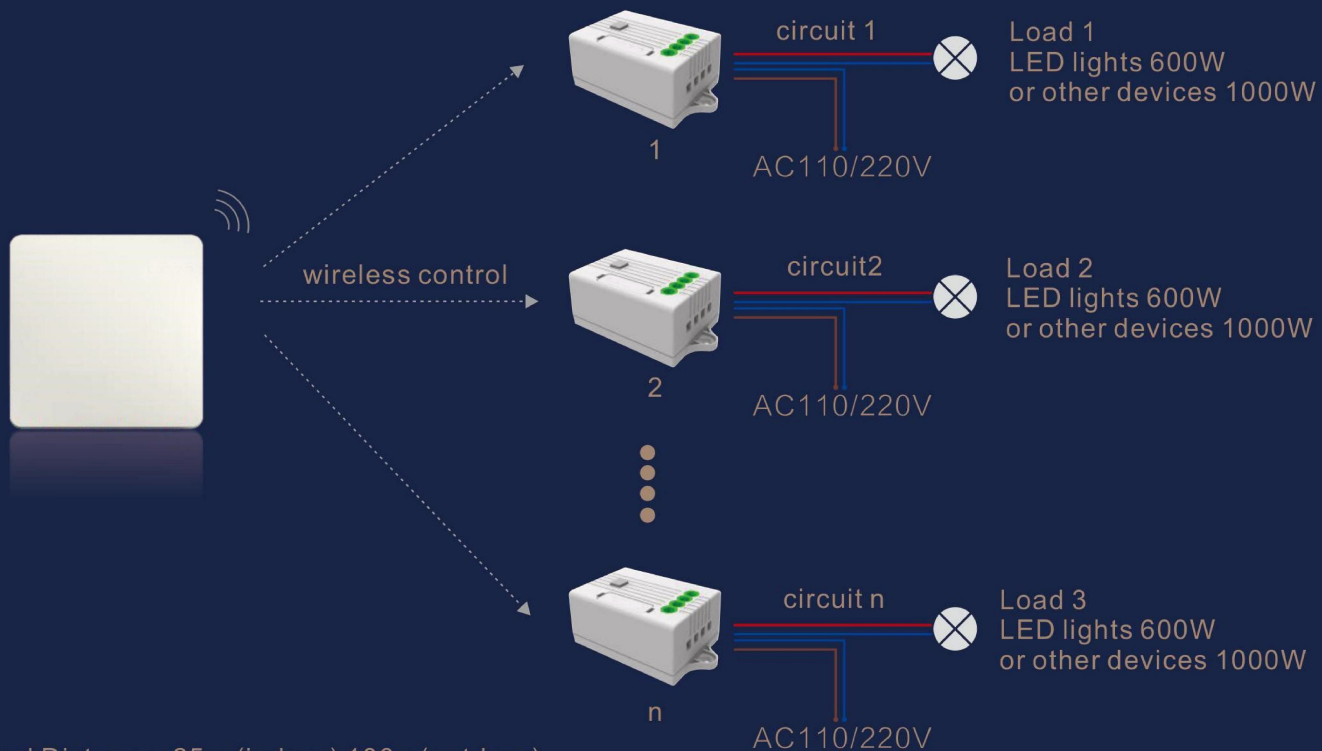
Ebelong receiver module & WIFI
Feature: can use mobile app and alexa voice control lights
Operating Voltage: AC85-265V 50/60HZ
Control Channel: One circuit Control
Standby Power Consumption: < 0.3W
Receiving Sensitivity: -110dB
Storage Capacity: can store 10 wireless switch information
Control Component Type: relay
Rated Current : AC 1A
Connection: Terminal
Product Weight: 55g

1 Single control (one switch button controls one-way controller for one circuit)



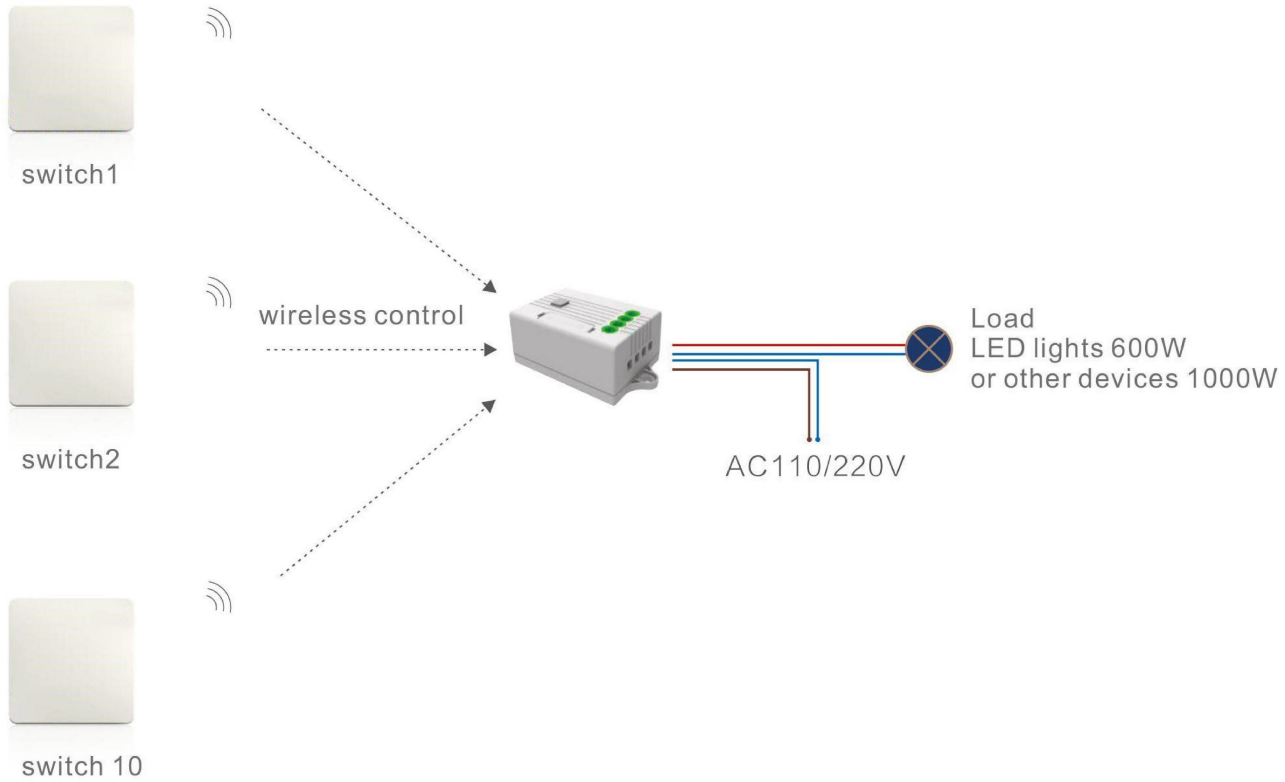
* Control Distance: 25m (indoor) 100m(outdoor)

2 Master control (one switch button controls all one-way controllers for different circuits)



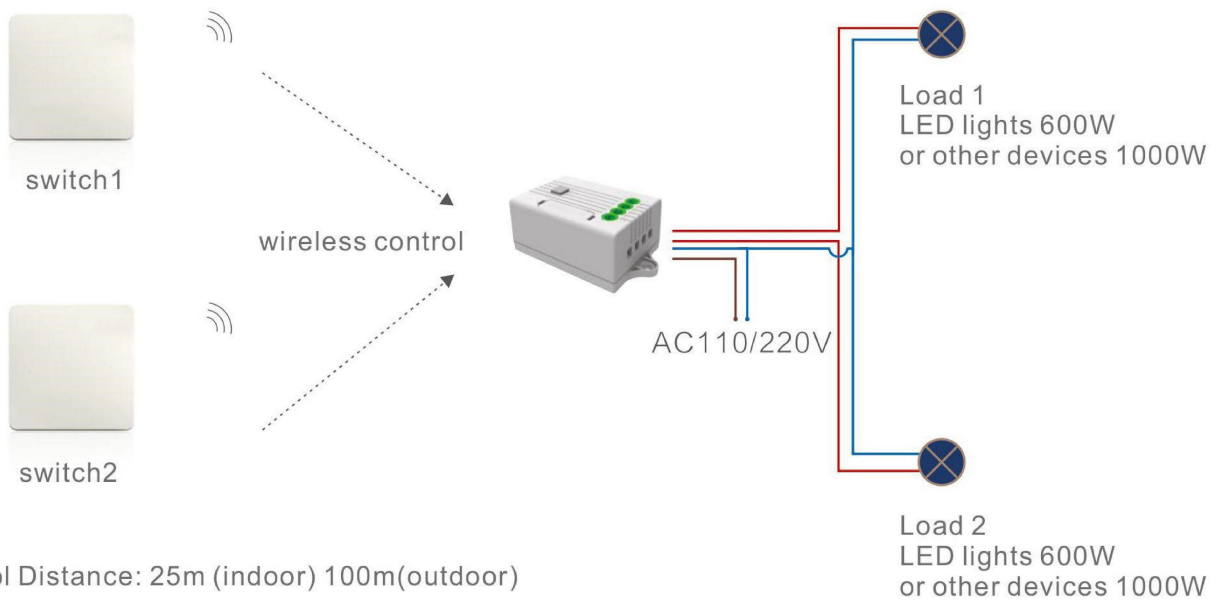
* Control Distance: 25m (indoor) 100m(outdoor)

3 Double control/Multi-control (Several switches in different places control the same one controller)



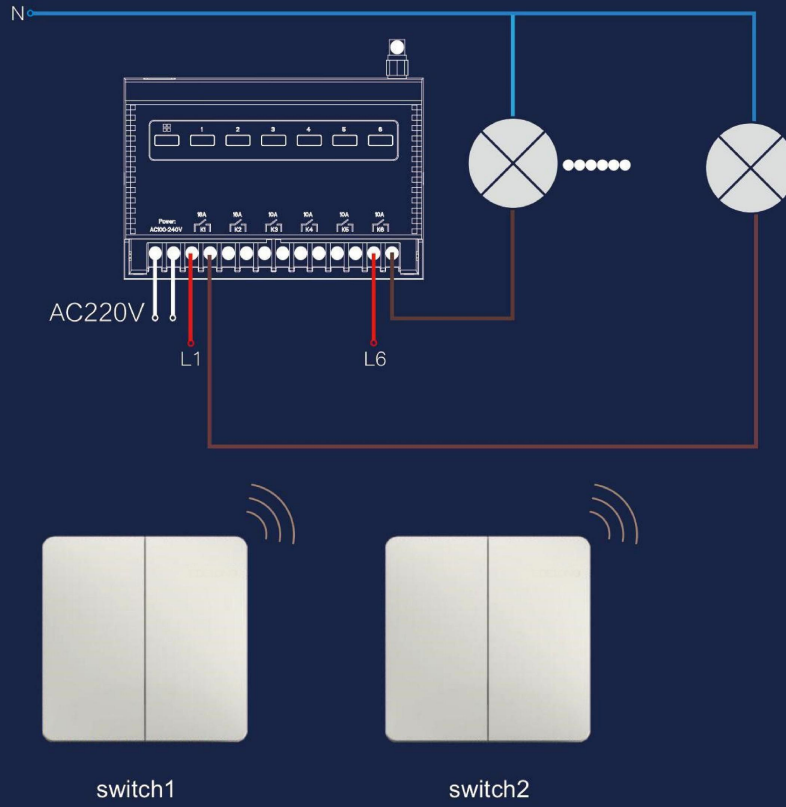
* Control Distance: 25m (indoor) 100m(outdoor)

4 Two way controller (2 switches can control 2 independent circuits by one 2-way controller)

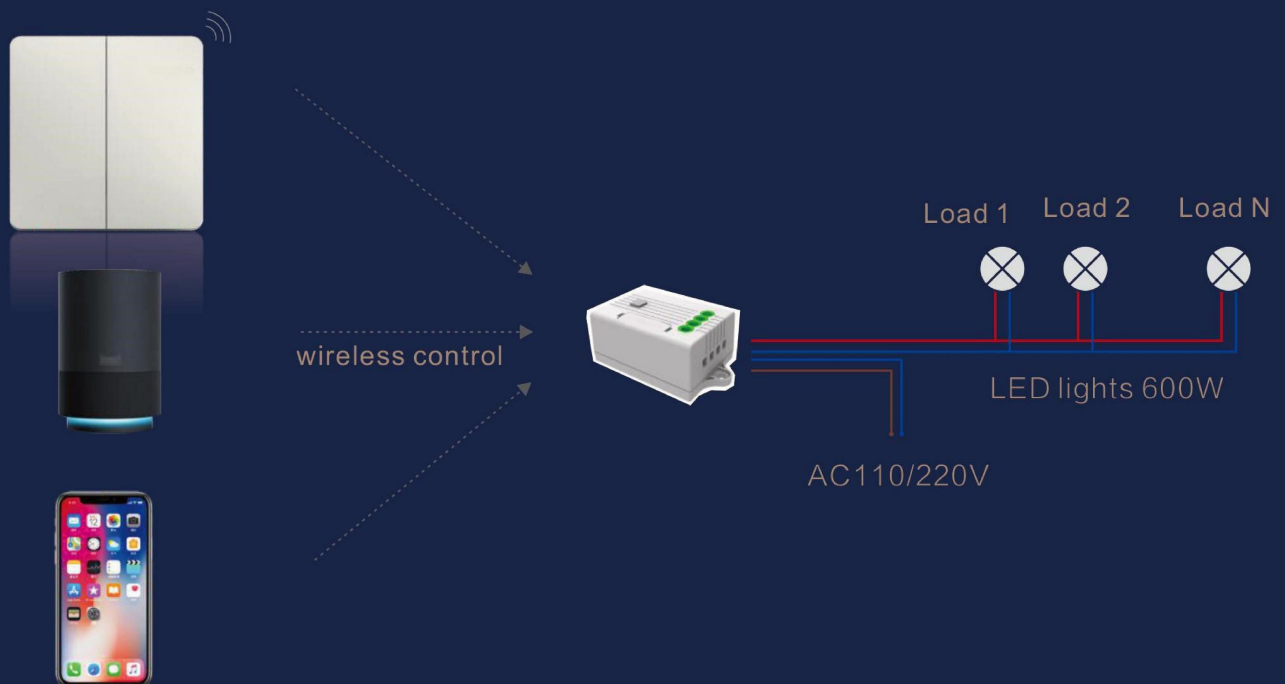


* Control Distance: 25m (indoor) 100m(outdoor)

six way controller application



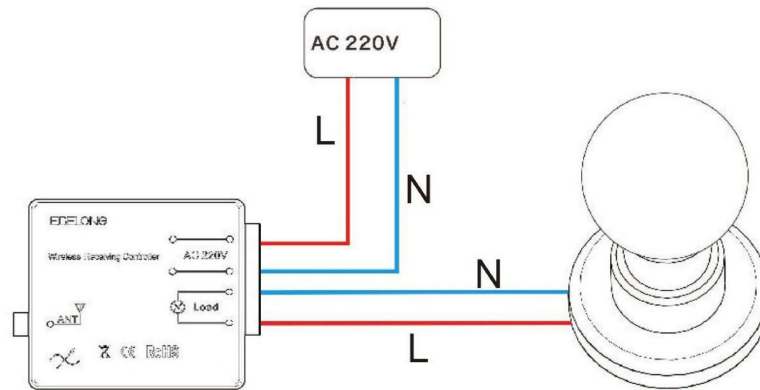
Multi-way controlling application



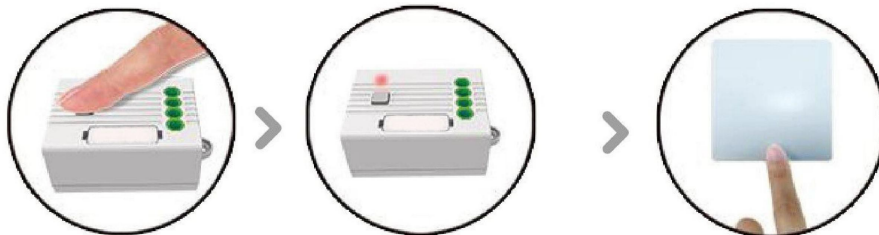
So easy installation
only 3 steps

Only 3 steps you can use all the application way as you want.

- 1 **Connecting:** Connect the lights with controller. Keep them connected to power.



- 2 **Pairing:** press the controller function button 3 seconds until the indicator flashes, and then press the switch button one time. Pairing is successful.



press the function button for 3 seconds, and indicator flashes, indicator flashes

press the kinetic switch button, and then pairing is done,

- 3 **Pasting:** Use the 3M sticker to paste the switch at anywhere you want. Now all are finished.

